



As of August 20, TSA has certified 1008 facilities in 40 states (309 cities), the District of Columbia, and 2 U.S. Territories.

If you are interested in which freight forwarders (IACs) and independent cargo screening facilities (ICSFs) are certified please visit these links on [tsa.gov/ccsp](http://www.tsa.gov/ccsp):

IACs - http://www.tsa.gov/assets/pdf/ccsp_iacs.pdf

ICSFs - http://www.tsa.gov/assets/pdf/independent_cargo_screening_facilities.pdf

1008	
IACs	525
Shippers	393
ICSFs	90

Thank You for Your Interest in CCSP

Welcome to the Bi-Weekly CCSP Newsletter. This publication is part of a series of program updates offered to CCSP participants and other interested entities to provide news and critical program information.

Another CCSF Milestone

The Certified Cargo Screening Program has reached another milestone. Ending August, the program has certified over 1000 facilities. Congratulations to all who have successfully joined the program. If you have questions or concerns regarding the program please contact your primary regional Principal Cargo Security Analyst (PCSA) (please refer to the CCSP Responsibility Chart and Map on pages 3 and 4 of this newsletter) or email CCSP@dhs.gov.

CCSP in the News

Survey of airfreight forwarders shows majority experienced no service disruptions or only minor snags after the mandate went into effect. To read more, please visit: http://www.dcvelocity.com/articles/20100818_first_week_air_security_regime_few_hitches/

Interview with Steve Alterman, president of the Cargo Airline Association, which represents the nation's all-cargo air carriers, in which he discusses the CCSP program. To read further, please visit: http://www.dcvelocity.com/articles/20100818steve_alterman_interview/

TSA Director John Pistole endorses full-body imagers and discusses the CCSP among other counterterrorism issues. To read more, please visit: <http://tinyurl.com/27wxeh>

Do You Have Questions Regarding CCSP?

If you are an applicant and have any questions or concerns regarding the program, e.g., response time, issues regarding certification requirements, etc., please contact your regional Principal Cargo Security Analyst (PCSA) (please refer to the CCSP Responsibility Chart, Map, and contact information on pages 3 and 4 of this newsletter). The PCSA is the CCSP subject matter expert and primary contact for an applicant. They can address any and all questions or issues up to and post-certification regarding the CCSP.



CCSF Cargo Reporting Requirements Update – Shippers/ICSFs Only

As a reminder, certified **Shippers and ICSFs** are required to submit cargo data for the month of August 2010 into CRT by Friday, September 10, 2010 to remain in compliance with the Order. Thus, Shippers and ICSFs have three weeks to submit August cargo data to CRT before being found non-compliant.

If you have not received credentials or require another user, please email CargoReporting@dhs.gov for assistance.

Alternatively, if you still have questions or issues in using CRT to submit your August 2010 cargo data, please contact the CRT Helpdesk at (866) 906-0891 or fas@dhs.gov.

SSI CCSP Updates

Reminder: SSI program updates will continue to be offered via the CCSP WebBoard (Shippers and ICSFs) and IACMS (IACs) (**accessible only by certified entities**). Please refer to your respective site regularly for additional program information.

Use of Stickers, Stamps, and Tags as SCI

TSA created an allowance for the use of stickers, stamps, and tags as Screened Cargo Identifiers. Stickers and stamps must be imprinted or affixed to the shipment to indicate that the cargo has been screened by a particular CCSF. A stamp must meet the same specifications outlined for stickers in the Standard Security Program and/or Amendments. Tags may also be used for pieces when the piece does not allow for the application of a sticker or stamp as outlined in the SSP or Amendment.

For additional clarification on the use of stickers, stamps, and tags please contact your PCSA.

Contact Us

Should you have any questions regarding the CCSP or content included in this publication, please contact your primary regional Principal Cargo Security Analyst (PCSA) or email CCSP@dhs.gov.

<http://www.tsa.gov/ccsp> – program information and downloadable materials

CCSP@dhs.gov – general questions and CCSP application requests and submittals

PCSAs – consultancy and assessment for CCSP applicants (see contact info on pages 3 and 4)



West

East

Marilyn Christiansen

Marilyn.Christiansen@dhs.gov

Top 18 Airport(s): SFO

Alaska
N. California
Idaho
N. Nevada

Yvette Jamison

Yvette.Jamison@dhs.gov

Top 18 Airport(s): ATL, BOS

Alabama
Georgia
Indiana
Maine
Massachusetts
New Hampshire
North Carolina
Rhode Island
South Carolina
Vermont

Alida Offenbach

Alida.Offenbach@dhs.gov

Top 18 Airport(s): LAX, HNL

Arizona
S. California
Guam
Hawaii
S. Nevada
Utah

Carl Trombatore

Carl.Trombatore@dhs.gov

Top 18 Airport(s): DTW, PHL

N. Connecticut
Kentucky
Michigan
Ohio
Pennsylvania
Tennessee
West Virginia

Lon Siro

Lon.Siro@dhs.gov

Top 18 Airport(s): DEN, SEA

Colorado
Kansas
Missouri
Montana
Oregon
Washington
Wyoming

Edgar Rivas

Edgar.Rivas@dhs.gov

Top 18 Airport(s): ORD

Illinois
Iowa
Minnesota
Nebraska
Puerto Rico
Wisconsin

MaryJill Taylor

Maryjill.Taylor@dhs.gov

Top 18 Airport(s): LAX

S. California

Kathleen Kelly

Kathleen.Kelly@dhs.gov

Top 18 Airport(s): MCO, MIA, IAD

Florida
Georgia
South Carolina
Virginia
District of Columbia

Henry 'TC' Clark

Henry.Clark@dhs.gov

Top 18 Airport(s): IAH

Arkansas
Louisiana
Mississippi
Texas

Henry Murray

Henry.Murray@dhs.gov

Top 18 Airport(s): EWR, JFK

S. Connecticut
New Jersey
New York

Ruth Porrata

Ruth.Porrata@dhs.gov

Top 18 Airport(s): DFW

Arizona
New Mexico
Oklahoma
Texas

Don Basso

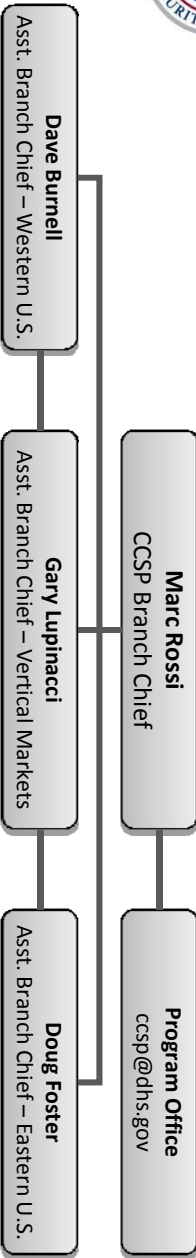
Donald.Basso@dhs.gov

Delaware
Maryland



CCSP Regional Responsibility Map: 12 Regions

As of August 20, 2010



Lon Siro – PCSA
Lon.Siro@dhs.gov

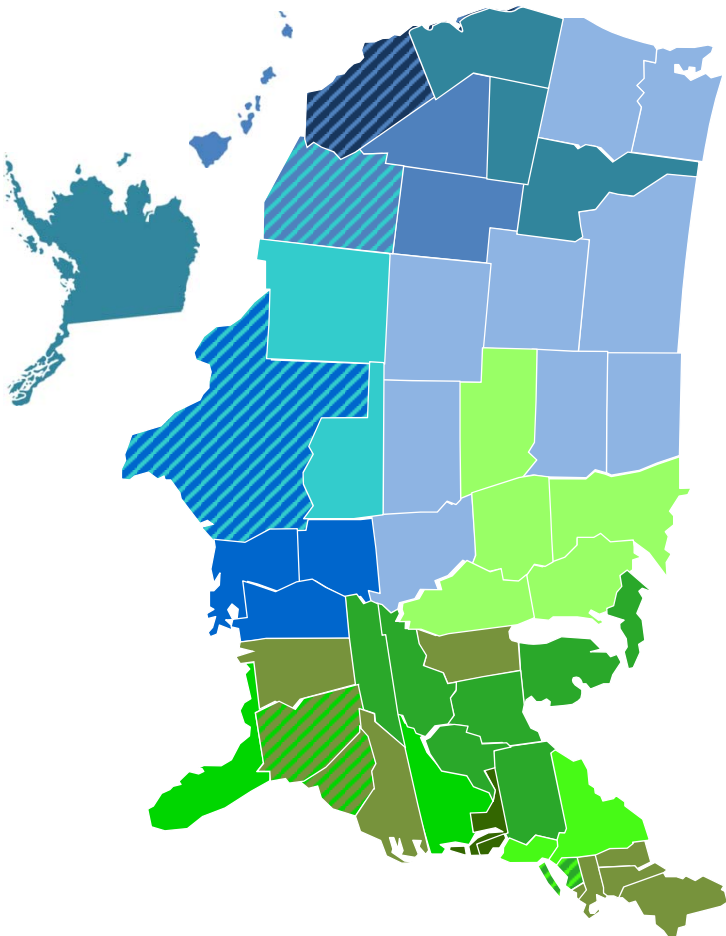
Marilyn Christiansen – PCSA
Marilyn.Christiansen@dhs.gov

Aida Offenbach – PCSA
Aida.Offenbach@dhs.gov

Mary Jill Taylor – PCSA
Maryjill.Taylor@dhs.gov

Ruth Porrata – PCSA
Ruth.Porrata@dhs.gov

Henry 'TC' Clark – PCSA
Henry.Clark@dhs.gov



Don Basso – PCSA
Donald.Basso@dhs.gov

Carl Trombatore – PCSA
Carl.Trombatore@dhs.gov

Yvette Jamison – PCSA
Yvette.Jamison@dhs.gov

Henry Murray – PCSA
Henry.Murray@dhs.gov

Edgar Rivas – PCSA
Edgar.Rivas@dhs.gov

Kathleen Kelly – PCSA
Kathleen.Kelly@dhs.gov

As of August 20, 2010